

Introduction to Network Security

Chapter 4

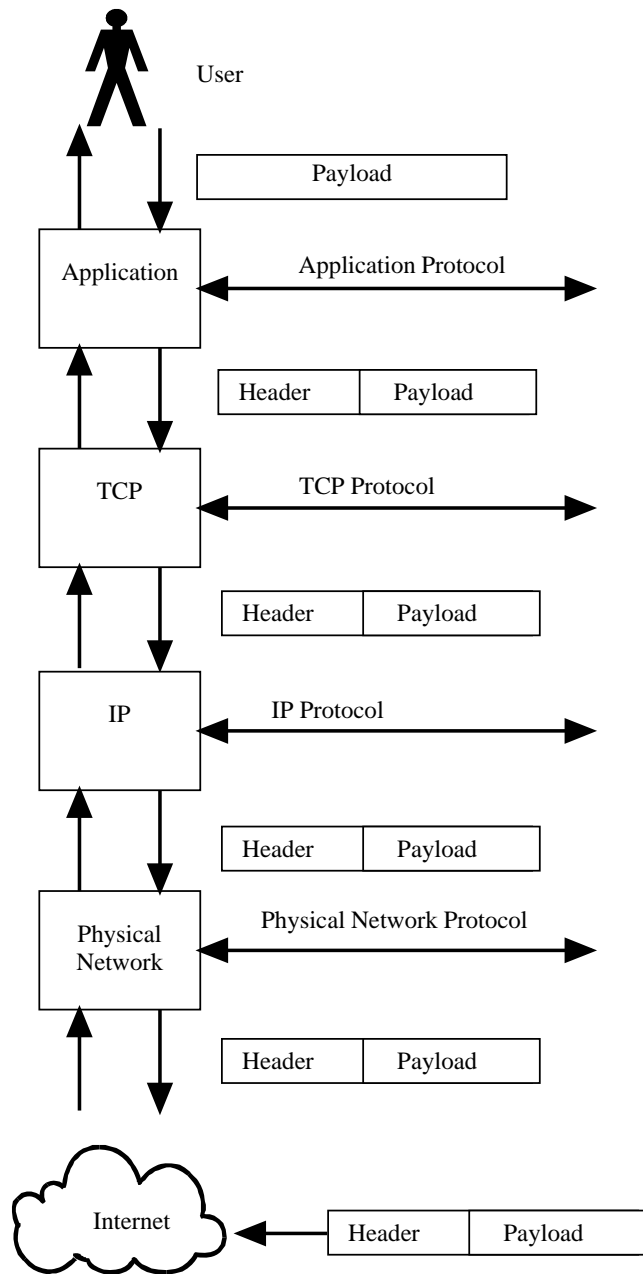
Taxonomy of Network-Based Vulnerabilities

Topics

- Network Security Model
- Header attacks
- Protocol Attacks
- Authentication Attacks
- Traffic attacks

Network Security

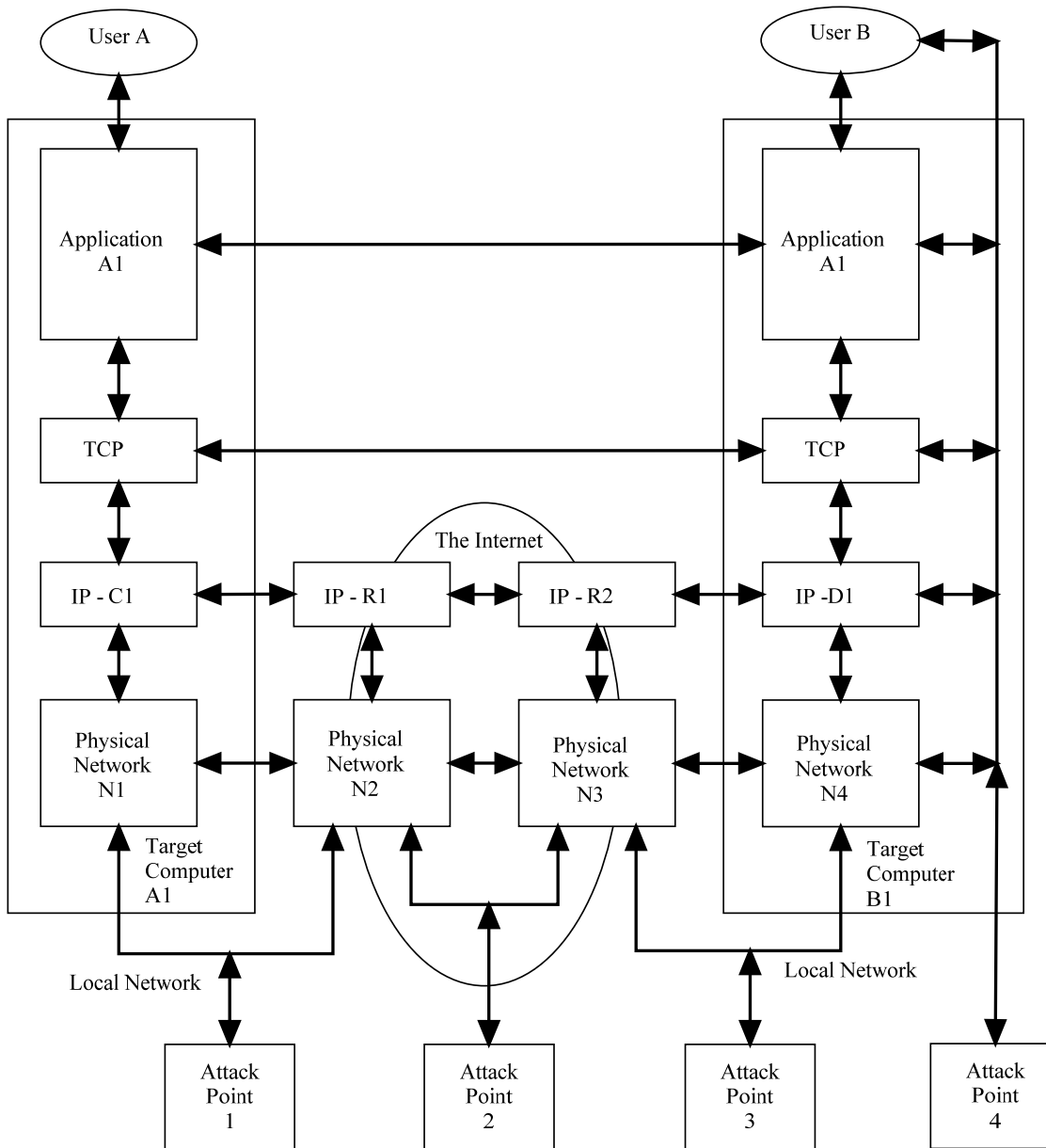
- Who (authentication)
 - Good guys
 - Bad Guys
- What to Attack
 - Protocols
 - Network connected Applications
 - Infrastructure



Layered Model of Attack Data

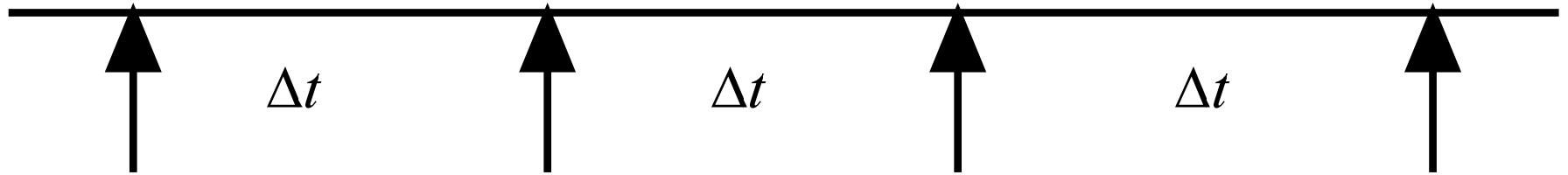
- Each layer receives data from the layer below and passes data to the layer above it without looking at it
- An attacker can insert information into the payload in order to send data to a particular layer

Threat Model



- Attacker 1 & 3 can attack any layer on computers connected to the same network
- Attacker 2 can attack the TCP & Application layers of computers A1 & B1 and the IP layer of any device
- Attacker 4 has taken over the computer

Vulnerabilities, Exploits and Attacks



Vulnerability

Exploit

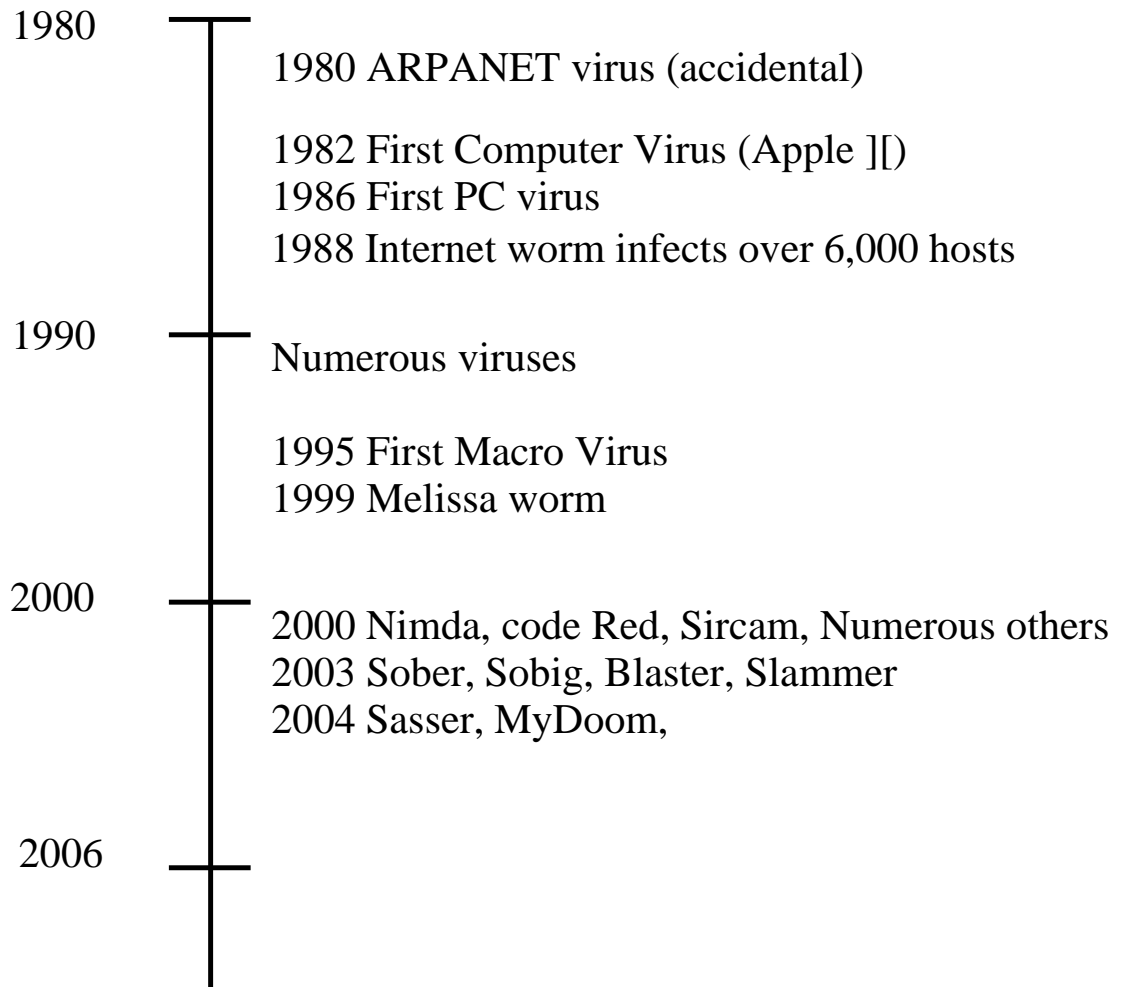
Attack
Code

Attacks

Design Vulnerability
Implementation Vulnerability
Configuration Vulnerability

Attack Time Line

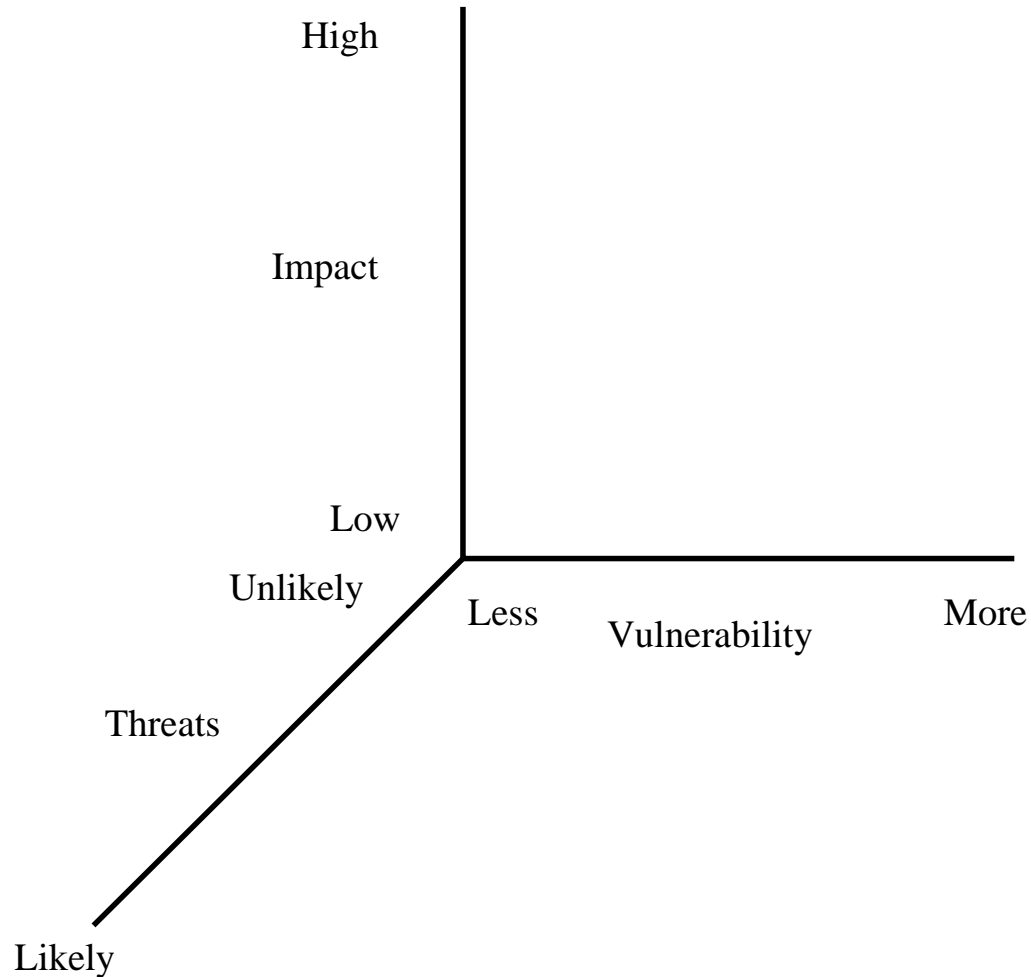
- Time between attacks has decreased and scale of attacks has increased
- Attacks now have multiple variations that can occur within hours of each other



Risk & Risk Assessment

- Risk is a measure of how critical something is and is a combination of:
 - **Threat** (How likely is it that the target will be attacked)
 - **Vulnerability** (How likely there is a weakness in the target)
 - **Impact** (What is the effect of losing the target)
- Risk assessment is the process where you decide how important something is and how hard you are going to work to protect it.

Risk Graph



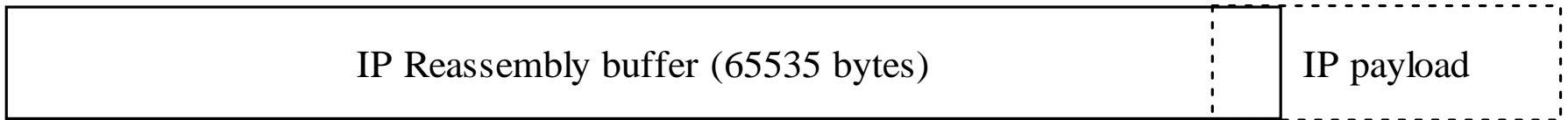
Network Security Taxonomy

- Header based
- Protocol based
- Authentication based
- Traffic Based

Header Based

- Creation of invalid packets, different protocols handle bad packets differently
- Source and destination address manipulation
 - Device can be confused by setting source and destination to the same address
- Setting bits in the header that should not be set
- Putting values in the header that are above or below the level specified in the standard

Example: Ping of Death



offset = 65528 (max value)

length = 100

Network Protocol Issues

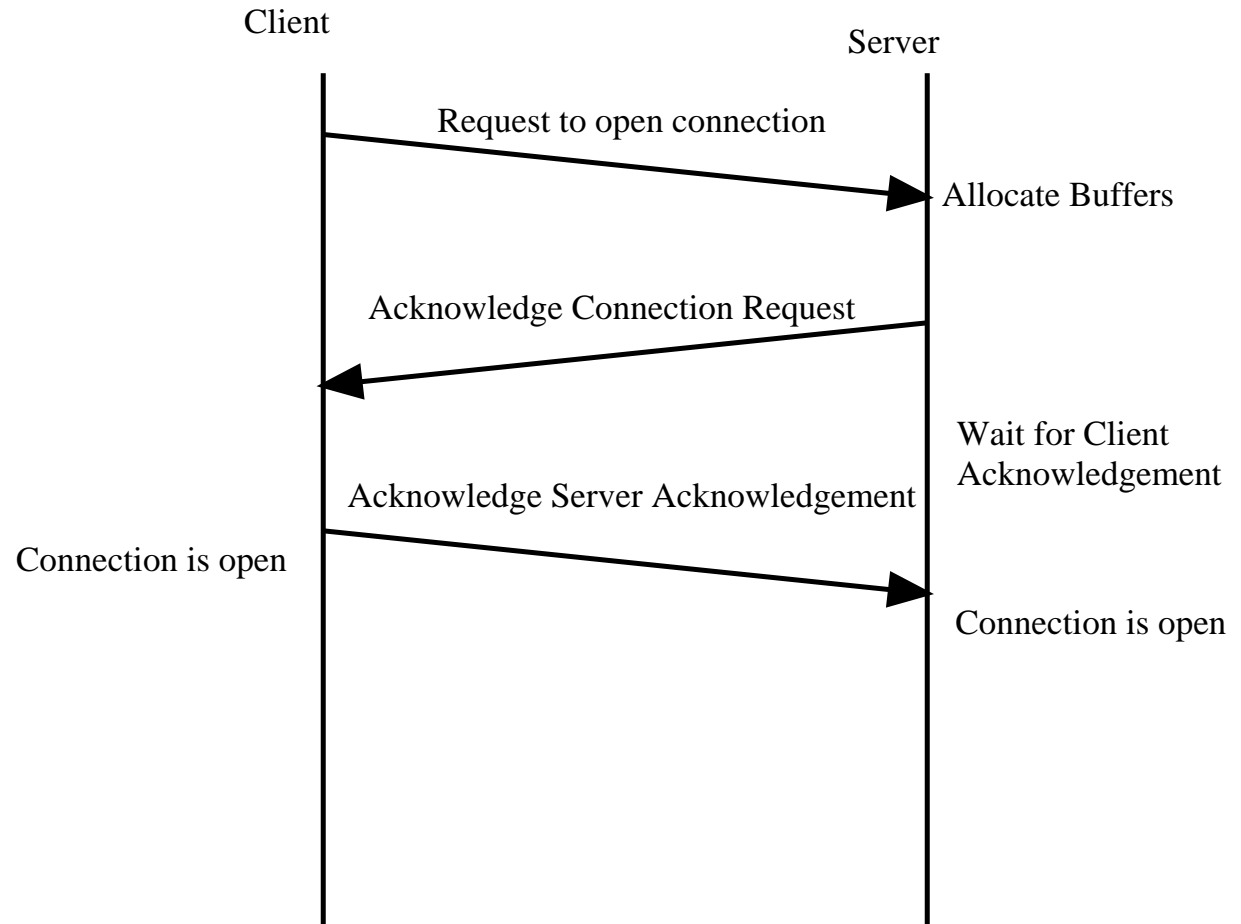
- Timing / procedural
 - Who talks first, who says what and when
 - Think of a phone call conversations, there is a protocol, the person picking up the phone talks first
 - Attacks usually involve valid packets that are out of order, arrive too fast, or are missing packets

Protocols attacks

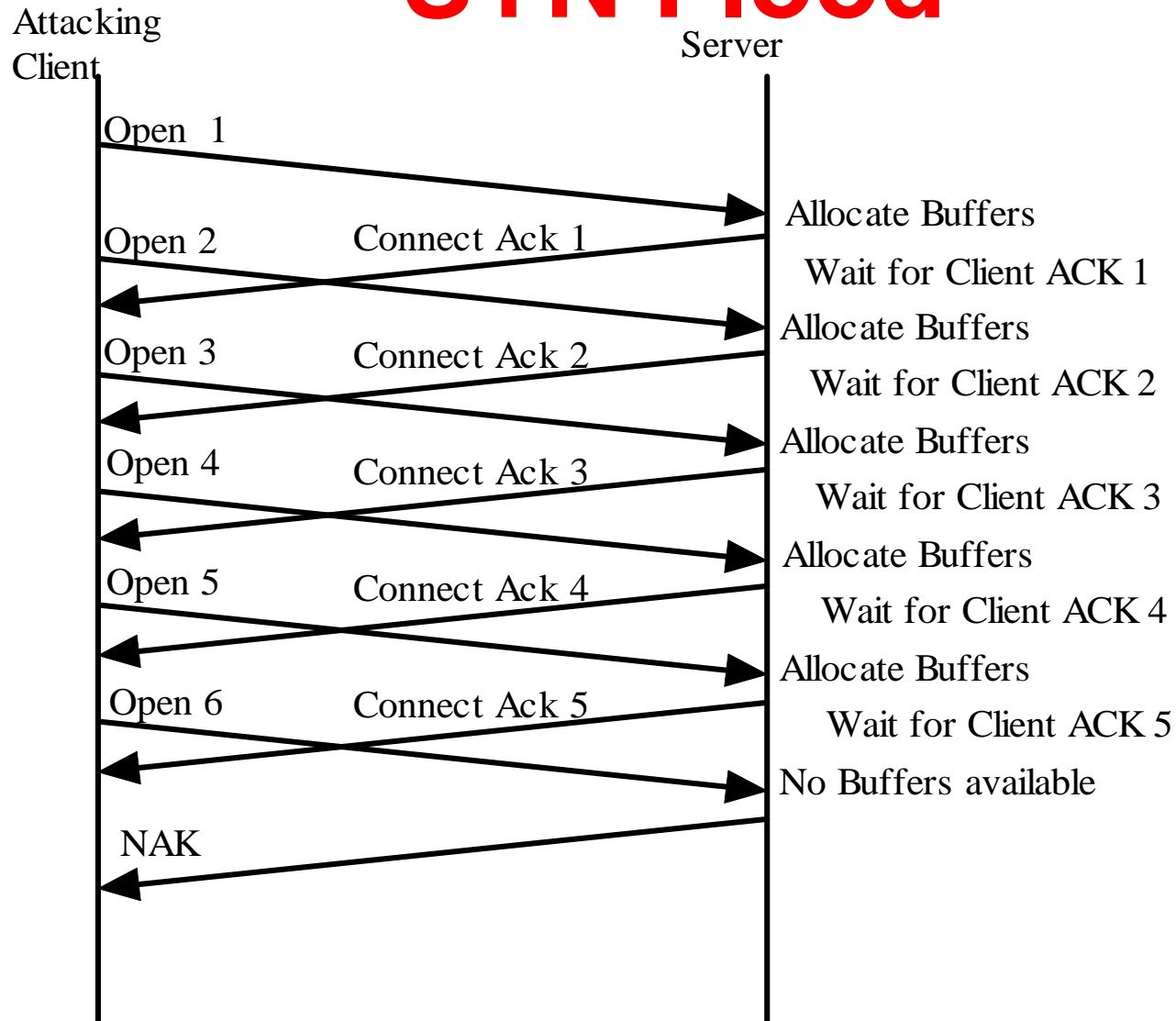
- You can shutdown the protocol itself
- Send packets telling the device to stop talking
- For connectionless protocols you can answer as the server and tell the client the server is down.

Example: Syn Flood

- TCP 3-way Handshake



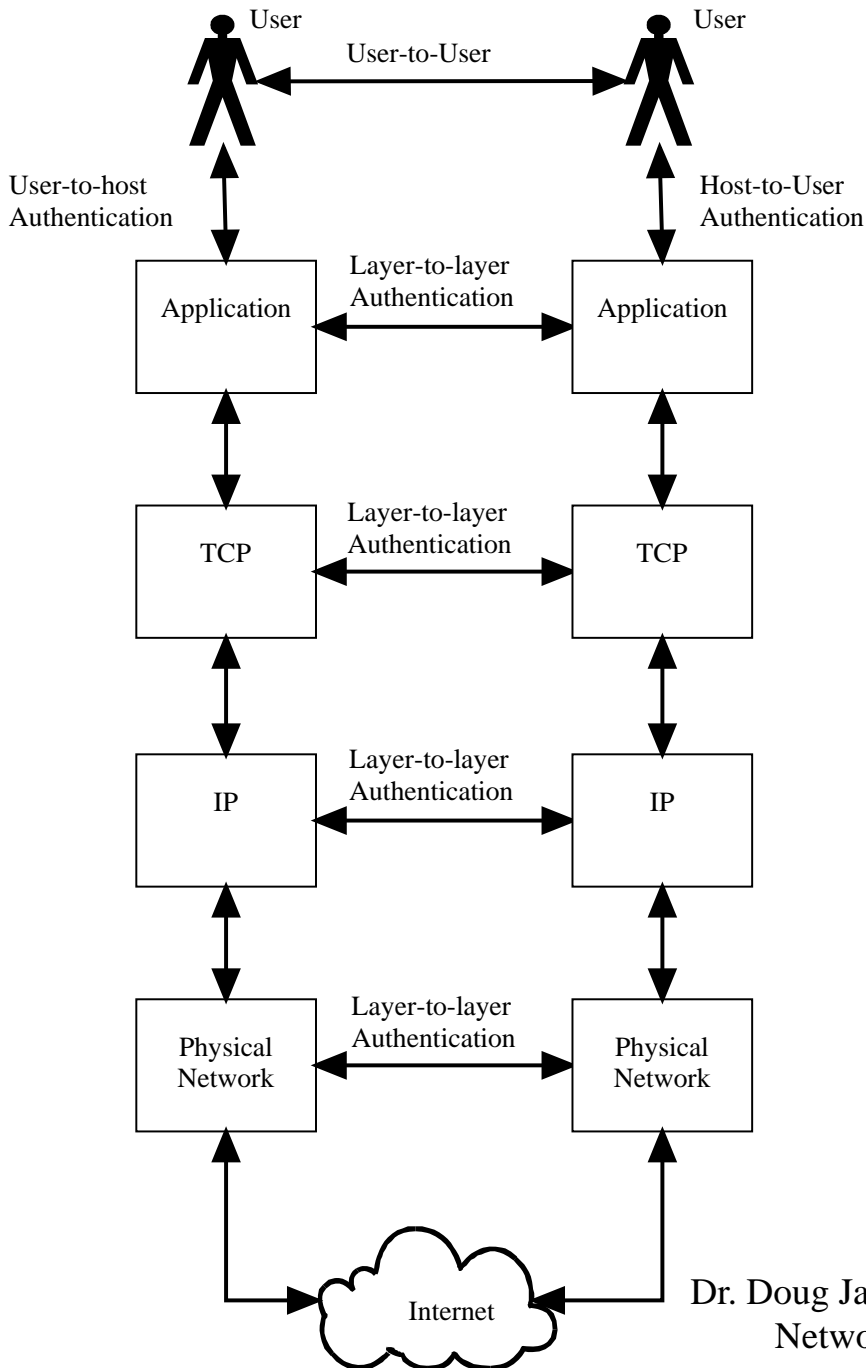
SYN Flood



Authentication-Based

- Authentication is the proof of one's identity to another.
- Often thought of as username & password based
- In a network addresses are often used to authenticate packets.
 - Like the 4 addresses used to identify a packet in the Internet

Network Authentication



Authentication

- Four different types of authentication
 - User to host
 - Person proves the identity to computer resource
 - Most prevalent
 - Host to Host
 - Work being done to strengthen this
 - In past usually done by IP address
 - User to User
 - Contracts, secure email
 - Useful for online auctions
 - Host to User
 - Server authenticating to user

Traffic-Based

- Too much data
 - To a single:
 - Application
 - Network device
 - Protocol layer
 - From:
 - Multiple machines
 - Single attackers
- Traffic Capture (sniffing)

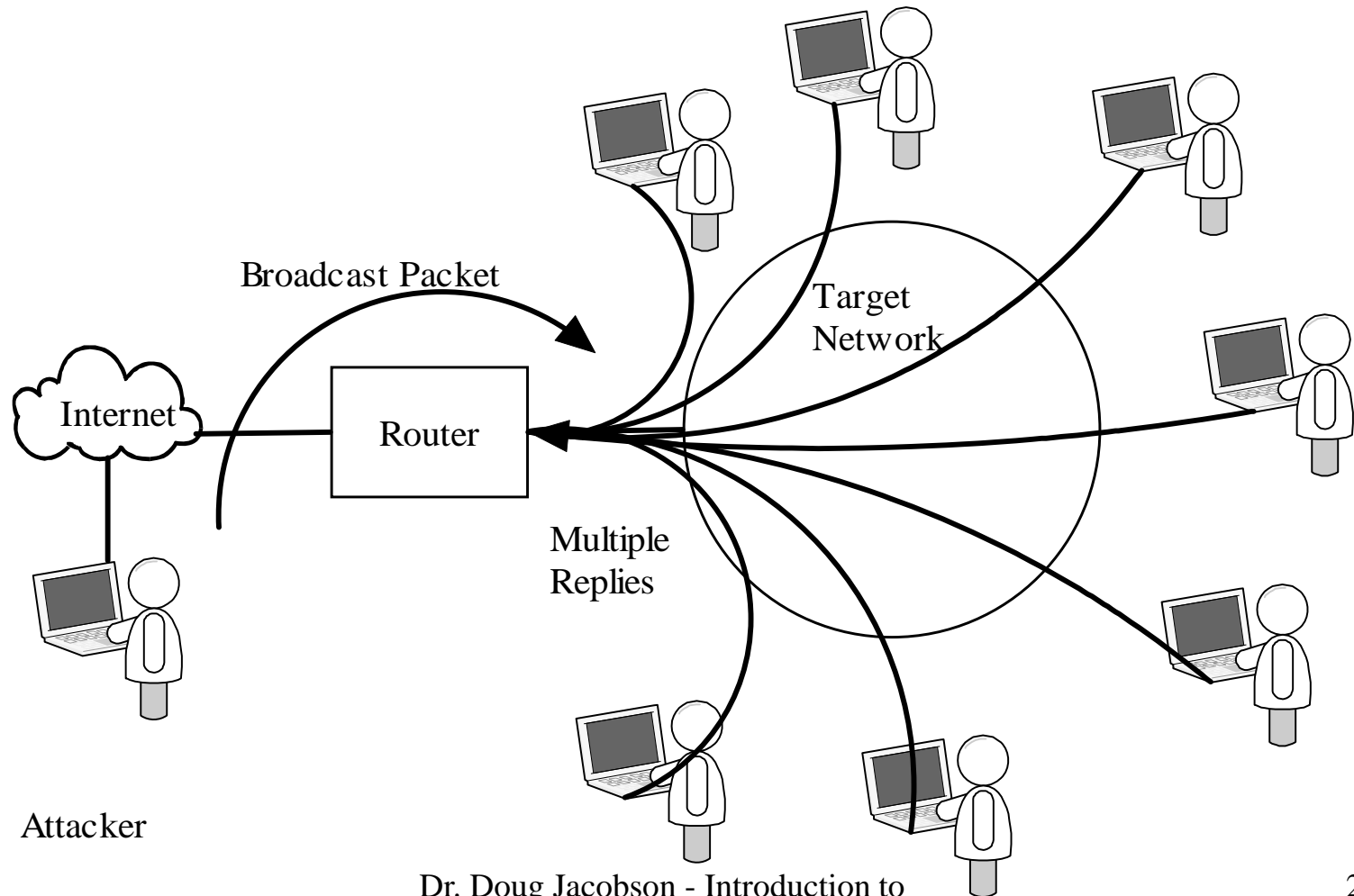
Traffic Attacks

- You can shutdown a service by:
 - flooding it with packets
 - opening a large number of connections
- You can shutdown network by:
 - flooding it with a large number of packets.
 - Broadcast packets will do the most damage
- You can shutdown a machine by:
 - flooding a machine with packets on multiple services
 - Broadcast storms

Denial of Service

- Denial of service is when a third party prevents valid network users access to services, machines, or applications
- Denial of service attacks can be difficult to detect and even harder to defend against.

Broadcast Flood Attack



Traffic Capture

- Packet sniffing can be played out against any layer in the network if the attacker is in a position to “see” the traffic.

Applying the Taxonomy

- Goal versus method
- The taxonomy applies to the method
 - Breaking authentication maybe the goal, but the method maybe be header-based
- Not all attacks will be covered since not all attacks are network based.